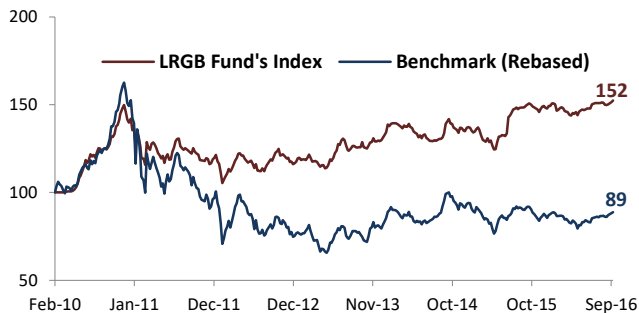


## QUARTERLY PERFORMANCE UPDATE

◀ Detailed Portfolio is now Available at Our Website ▶

### Outperformance Over Benchmark

(From Feb, 2010 to Sep, 2016)



In Q3 Of 2016, LRGB Funds (NAV) Index grew 3.0% and LRGB MF Price Index returned 19.6%

### Performance Statistics

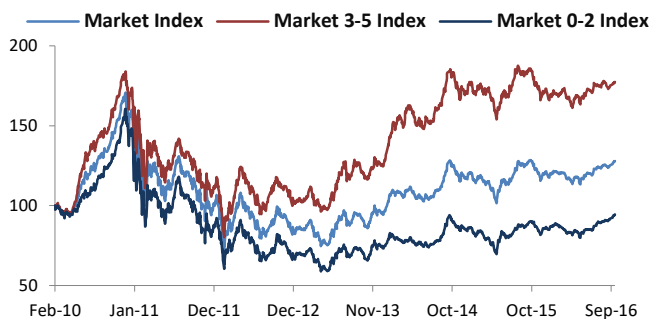
(From Feb, 2010 to Sep, 2016)

	LR Funds	Benchmark
Annualized Return ( $r$ )	6.7%	-1.8%
Annualized Std. Deviation ( $\sigma$ )	12.4%	24.0%
Return Per Unit of Risk ( $r/\sigma$ )	0.54	-0.075
Alpha ( $\alpha$ )	5.1%	
Beta ( $\beta$ )	0.46	
<b>Performance Attribution Analysis: Alpha (<math>\alpha</math>) Drivers</b>		
Asset Allocation	66%	
Security Selection	34%	

Our Material Outperformance Enabled Funds to Disburse Cash Dividend to Unit Holders in all Market Conditions

### Power of Research & Security Selection

(From Feb, 2010 to Sep, 2016)

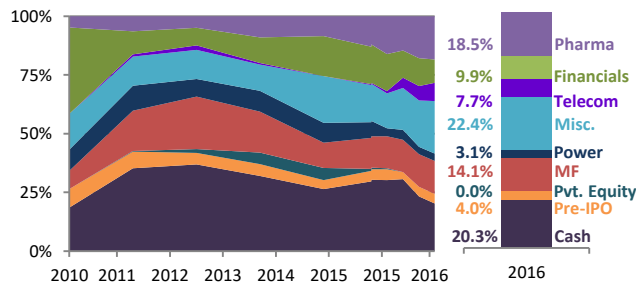


Time Tested & Robust Investment Process (Asset Allocation & Security Selection) is Our Edge in Almost all Market Conditions

### Active Management and Asset Allocation

Asset Size BDT 935 Crore

(From Feb, 2010 to Sep, 2016)



Our Dynamic Asset Allocation & Sector Rotation Continue to Add Material Value to Our Funds & Investors

### Consistent Value Addition Despite Highly Adverse & Illiquid Markets since 2010

(From Feb, 2010 to Sep, 2016)

Return*	1 M	6 M	YTD	1Yr	2Yr	3Yr	4Yr	5Yr	Since Inception		
									Fund	Benchmark	Alpha
DBH1STMF	1.8%	6.2%	-0.2%	-0.2%	7.9%	5.4%	5.2%	1.6%	4.6%	-1.8%	3.6%
GREENELMF	1.9%	6.1%	3.7%	3.9%	8.2%	7.2%	6.1%	3.3%	1.6%	-5.9%	2.7%
AIBL1STIMF	0.7%	4.8%	2.2%	0.5%	11.2%	8.7%	7.5%	4.8%	4.1%	-8.1%	4.2%
MBL1STMF	1.7%	6.4%	2.9%	2.6%	10.2%	7.6%	6.5%	3.9%	3.5%	-6.8%	4.1%
LRGLOBMF1	1.8%	6.5%	2.8%	3.3%	7.1%	5.9%	6.8%	NA	5.5%	-4.2%	4.0%
NCCBLMF1	1.7%	5.7%	-0.3%	-0.8%	6.6%	5.1%	5.9%	NA	6.5%	0.2%	3.5%
<b>BENCHMARK</b>	<b>3.1%</b>	<b>7.7%</b>	<b>1.4%</b>	<b>-2.6%</b>	<b>0.2%</b>	<b>4.4%</b>	<b>2.1%</b>	<b>-4.9%</b>	-	-	-

\*All Returns over one year are Annualized and Funds' listing dates are taken as inception dates (mentioned in website)

#### Key definitions:

- Benchmark:** Benchmark before Feb-2013, include rebased DGEN and from Feb-2013 onwards, DSEX.
- LRGB Fund's Index:** The index is a time-weighted index, consisted of dividend adjusted net assets of all the listed mutual funds managed by LR Global Bangladesh.
- LRGB MF Price Index:** A market weight based price index calculated using market capitalization of six mutual funds, managed by LR Global.
- Market Index:** This is a total market cap based index calculated by all the listed securities as components of the index.
- Beta:** Beta has been calculated by regression on the weekly returns of LR Global NAV index against the Benchmark from inception to reporting date.
- Alpha ( $\alpha$ ) = (Funds Return ( $r$ ) - Risk free rate) - Beta ( $\beta$ ) \* (Benchmark Return ( $r$ ) - risk free return).**
- Misc.:** Misc. includes Cement, Industrial, Food & Allied, Tannery, Insurance, Telecom, Textile and other small sectors.

For Calculation Methodology visit our website: [www.lrglobalbd.com/products/mutual-fund/knowledge-center/](http://www.lrglobalbd.com/products/mutual-fund/knowledge-center/)

WE EXPRESS OUR SINCERE GRATITUDE TO THE INVESTORS, SPONSORS, REGULATORS, TRUSTEE, CUSTODIAN & STOCK EXCHANGES FOR THEIR CONTINUED TRUST AND CONFIDENCE IN US.

Thank You  
Donald. S. La Guardia, Chairman